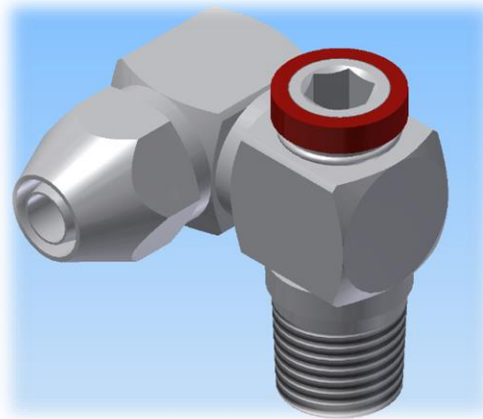


SWING  
SWIVEL

I.Field

## Swing-Swivel

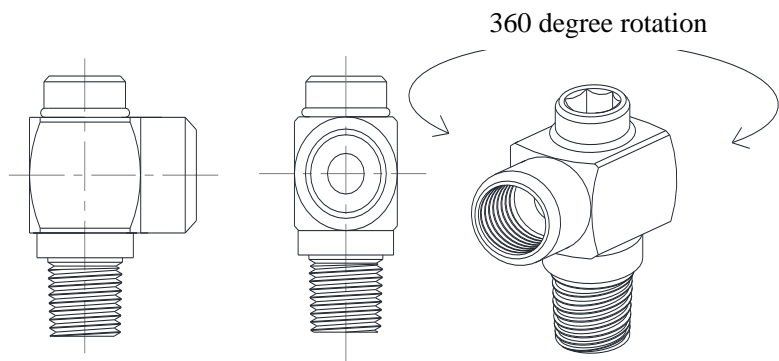
This comes in single-axis and dual-axis models. The dual-axis model is very flexible and can face in any direction.



### Swing-Swivel Single-Axis Model

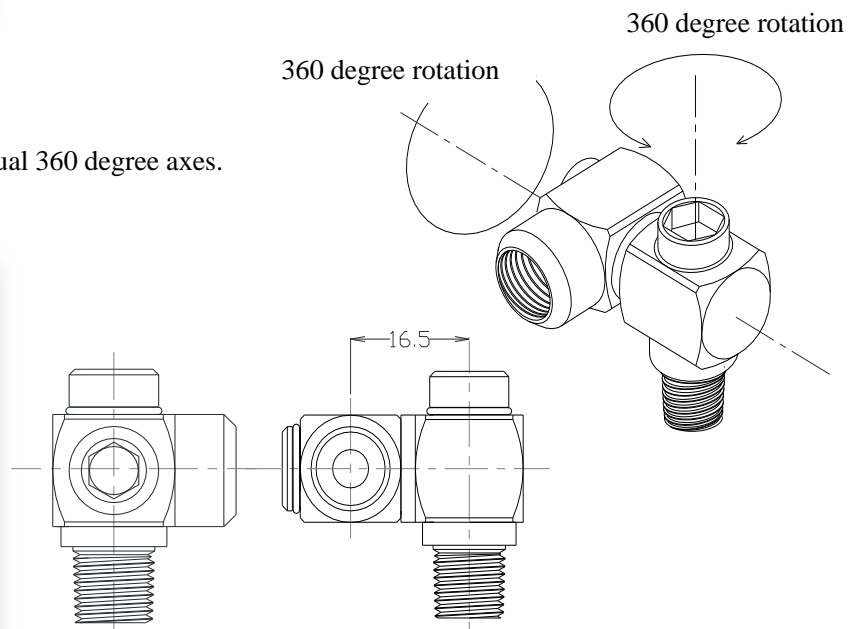
This is an L-shape, 360-degree rotating, single-axis model.

Attaching and removal is done with an Allen wrench. Can be installed in tight spots.



### Swing-Swivel Dual-Axis Model

Can face any direction since it rotates on dual 360 degree axes.



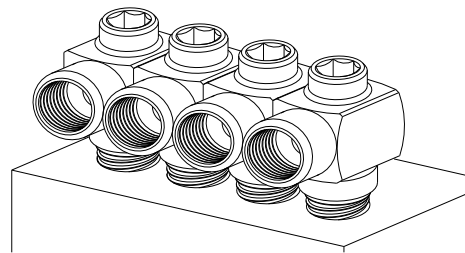
## Swing-Swivel Features

### 1. Attaching and Removal by Allen Wrench

Since it can be attached and removed with an Allen wrench, it's possible to install them in tight spots or narrow places easily.

If you are installing several, use electric or air powered tools.

Affix an Allen wrench tip to the tool to shorten installation time.



Can be installed in a row.

### 2. Categorize by Color

- 1) IN & OUT differentiation
- 2) Path differentiation
- 3) Fluid differentiation
- 4) Reduces improper installation
- 5) Metal parts resist corrosion

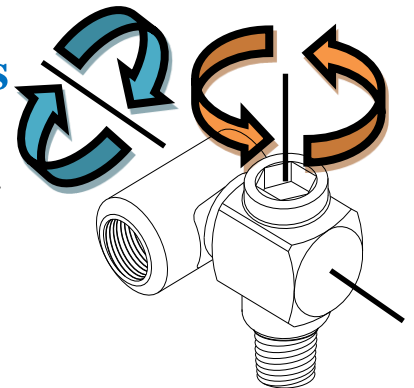


### 3. Universal Facing with Dual-Axis

This flexible model can be turned any direction you like.

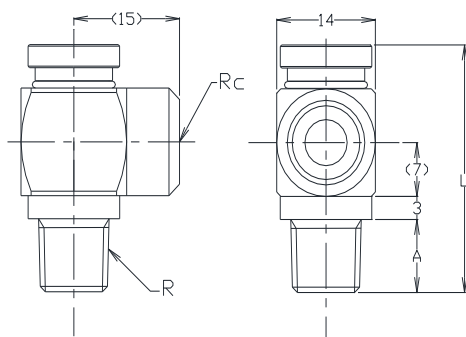
When attached to an output on your equipment, there is no stress on the hose or tubing since the facing can be changed.

The same function can be achieved when attached to functioning parts.

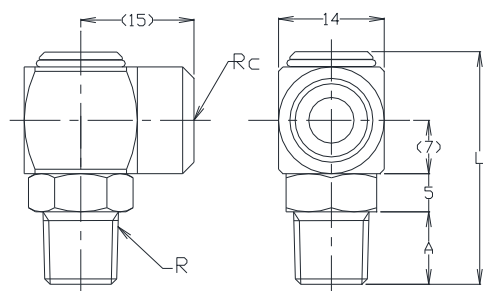
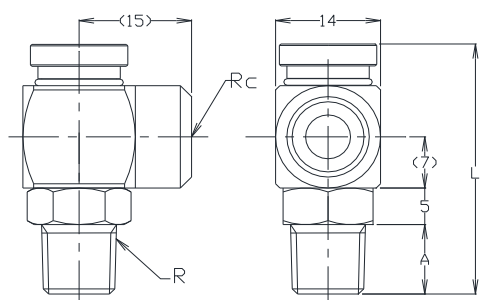


# Swing Swivel (Rc×R)

## S-R510-C



## SOH-R510-C

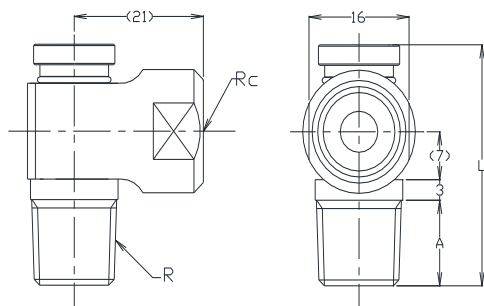


Name of product	Color of ring	Weight
S-R510-C	Red・Blue Yellow・Colorless	33g
SOH-R510-C	Red・Blue Yellow・Colorless	37g(36g)

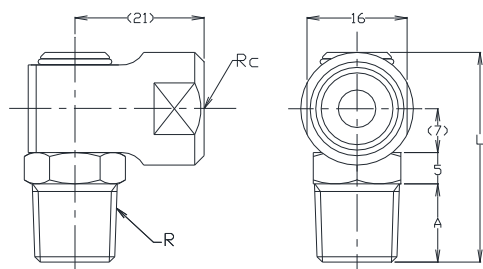
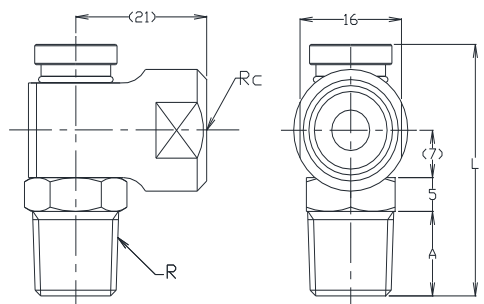
() is the length of the Colorless.

# Swing Swivel (Rc×R)

S-R620-C



SOH-R620-C



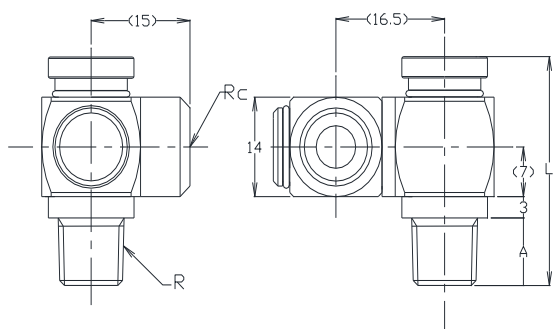
Body material	Steel (Plated)
"	Brass (Plated)
Ring material	Aluminum (Plated)
Seal material	Nitrile rubber (NBR)
Working temperature	-20°C ~ +60°C
Working pressure	1Mpa (10kgf/cm <sup>2</sup> )
Applicable fluids	Air

Name of product	Color of ring	Weight	R	Rc	A	L	Hex Wrench	Wrench
S-R620-C	Red・Blue Yellow・Colorless	52g	1/4	1/4	12.5	34.5	6	
SOH-R620-C	Red・Blue Yellow・Colorless	56g(55g)	1/4	1/4	12.5	36.5(33.5)		14

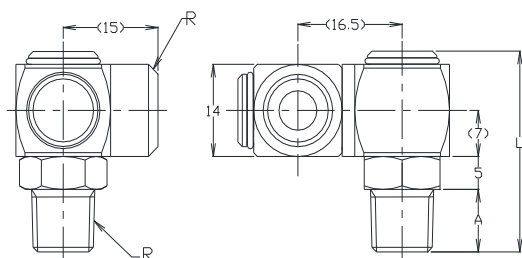
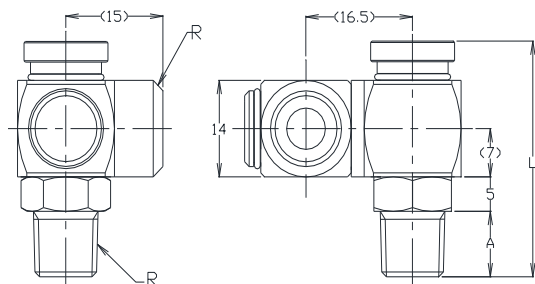
( ) is the length of the Colorless.

# Swing Swivel (Rc×R) 2-axis

S-RR510-C



SOH-RR510-C



Body material	Steel (Plated)
"	Brass (Plated)
Ring material	Aluminum (Plated)
Seal material	Nitrile rubber (NBR)
Working temperature	-20°C ~ +60°C
Working pressure	1Mpa (10kgf/cm <sup>2</sup> )
Applicable fluids	Air

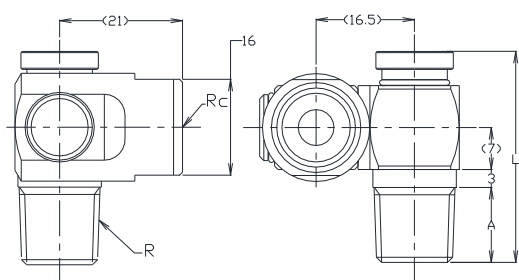
Name of product	Color of ring	Weight	R	Rc	A	L	Hex Wrench	Wrench	Axis
S-RR510-C	Red・Blue Yellow・Colorless	54g	1/8	1/8	9.5	31.5	6		2
SOH-RR510-C	Red・Blue Yellow・Colorless	58g(57g)	1/8	1/8	9.5	33.5(30.5)		12	2

() is the length of the Colorless.

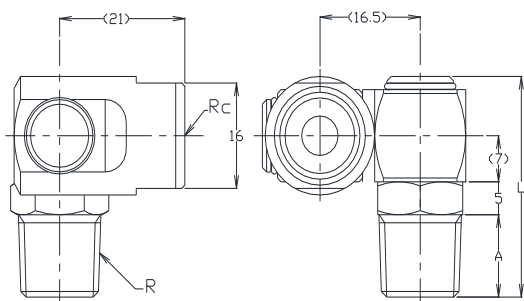
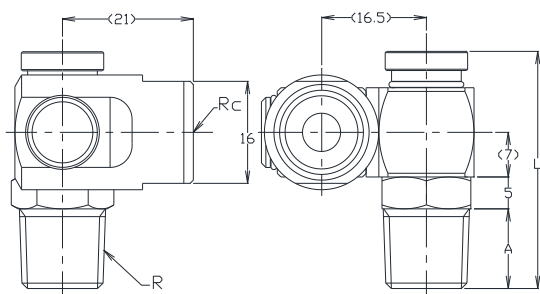


# Swing Swivel (Rc×R) 2-axis

## S-RR620-C



## SOH-RR620-C



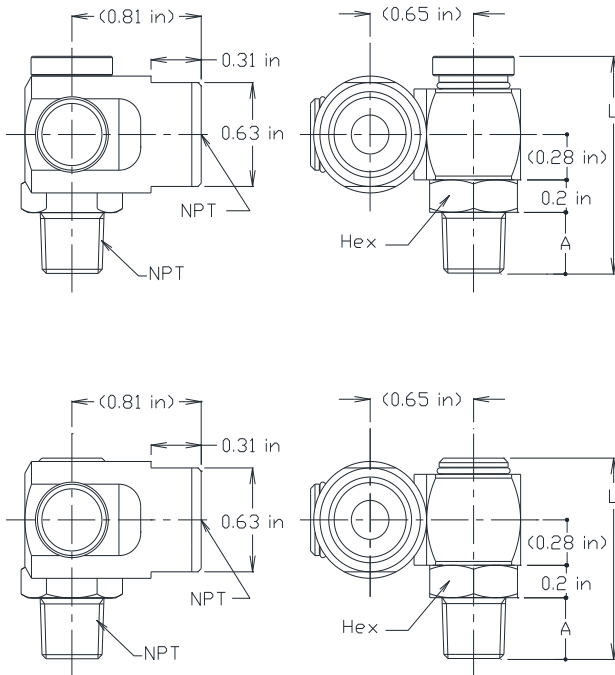
Body material	Steel (Plated)
"	Brass (Plated)
Ring material	Aluminum (Plated)
Seal material	Nitrile rubber (NBR)
Working temperature	-20°C ~ +60°C
Working pressure	1Mpa(10kgf/cm <sup>2</sup> )
Applicable fluids	Air

Name of product	Color of ring	Weight	R	Rc	A	L	Hex Wrench	Wrench	Axis
S-RR620-C	Red・Blue Yellow・Colorless	73g	1/4	1/4	12.5	34.5	6		2
SOH-RR620-C	Red・Blue Yellow・Colorless	77g(76g)	1/4	1/4	12.5	36.5(33.5)		14	2

# New

## Dual-Axis *NPT* Model

ISOH-RR620-C



Body material	Steel (Plated)
"	Brass (Plated)
Ring material	Aluminum (Plated)
Seal material	Nitrile rubber (NBR)
Working temperature	-20°C ~ +60°C
Working pressure	1Mpa(10kgf/cm <sup>2</sup> )
Applicable fluids	Air

Unit : inch

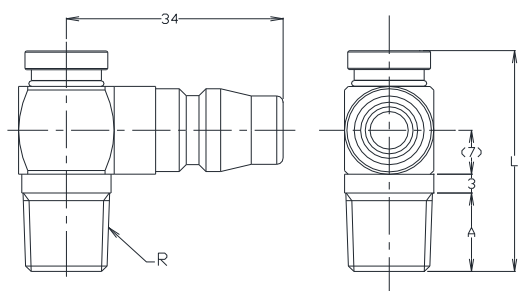
Name of product	Color of ring	Weight	External thread	Internal thread	A	L	Wrench	Axis
ISOH-RR620-C	Red・Blue Green・Colorless	55g(53g)	1/4 NPT	1/4 NPT	0.49	1.44(1.32)	9/16	2

() is the length of the Colorless.

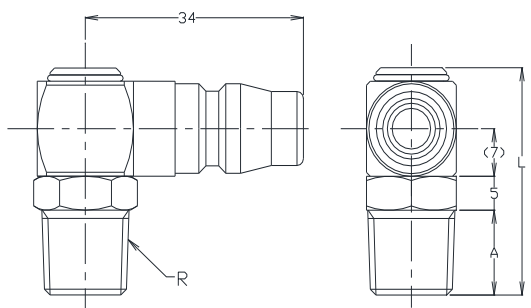
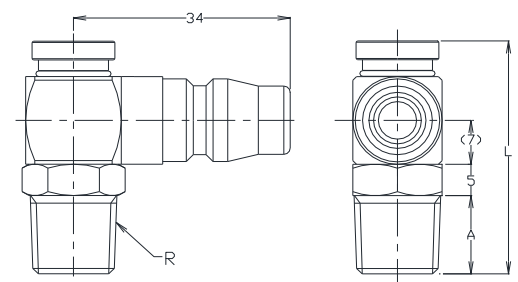


## Swing Swivel (Plug-R)

S-R511H-C • S-R621H-C



SOH-R511H-C • SOH-R621H-C

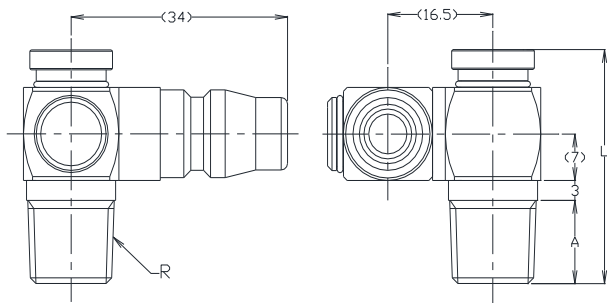


Name of product	Color of ring	Weight	R	A	L	Hex Wrench	Wrench
S-R511H-C	Red•Blue•Yellow•Colorless	48g	1/8	9.5	31.5	6	
S-R621H-C	Red•Blue•Yellow•Colorless	53g	1/4	12.5	34.5	6	
SOH-R511H-C	Red•Blue•Yellow•Colorless	52g(51g)	1/8	9.5	33.5(30.5)		12
SOH-R621H-C	Red•Blue•Yellow•Colorless	57g(56g)	1/4	12.5	36.5(33.5)		14

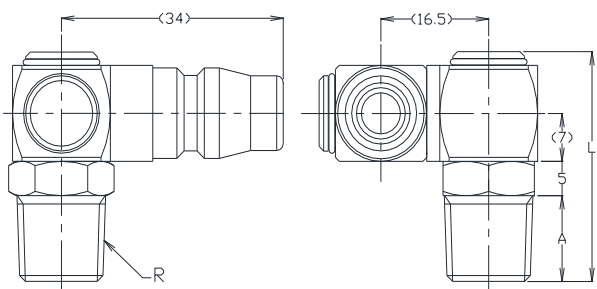
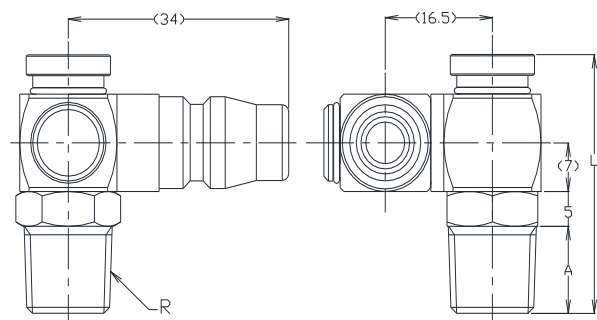
() is the length of the Colorless.

## Swing Swivel (Plug-R) 2-axis

### S-RR511H-C · S-RR621H-C



### SOH-RR511H-C · SOH-RR621H-C



Body material	Steel (Plated)
"	Brass (Plated)
Ring material	Aluminum (Plated)
Seal material	Nitrile rubber (NBR)
Working temperature	-20°C ~ +60°C
Working pressure	1Mpa (10kgf/cm <sup>2</sup> )
Applicable fluids	Air

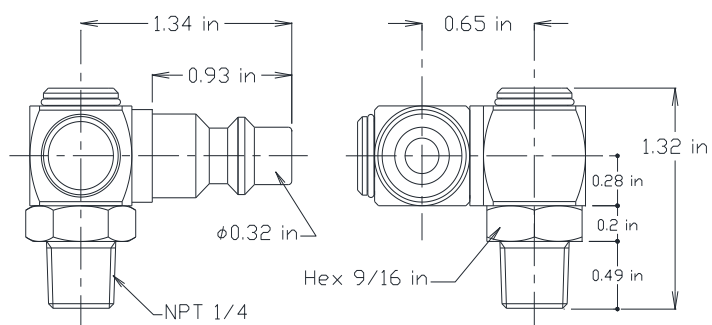
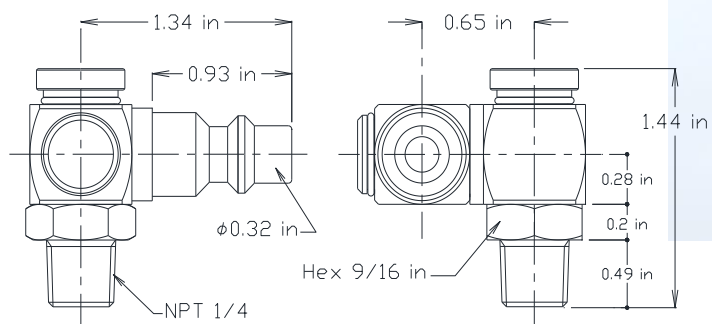
Name of product	Color of ring	Weight	R	A	L	Hex Wrench	Wrench	Axis
S-RR511H-C	Red·Blue·Yellow·Colorless	69g	1/8	9.5	31.5	6		2
S-RR621H-C	Red·Blue·Yellow·Colorless	75g	1/4	12.5	34.5	6		2
SOH-RR511H-C	Red·Blue·Yellow·Colorless	73g(72g)	1/8	9.5	33.5(30.5)		12	2
SOH-RR621H-C	Red·Blue·Yellow·Colorless	79g(78g)	1/4	12.5	36.5(33.5)		14	2

( ) is the length of the Colorless.

**New**

## Dual-Axis *NPT Model*

ISOH-RR621Q-C



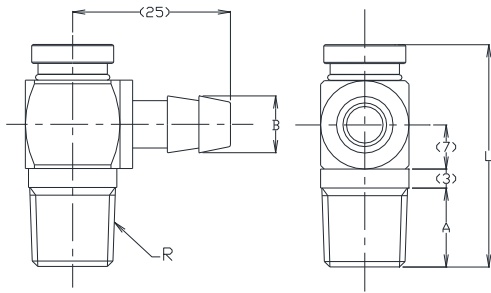
Body material	Steel (Plated)
"	Brass (Plated)
Ring material	Aluminum (Plated)
Seal material	Nitrile rubber (NBR)
Working temperature	-20°C ~ +60°C
Working pressure	1Mpa(10kgf/cm <sup>2</sup> )
Applicable fluids	Air

Unit : inch

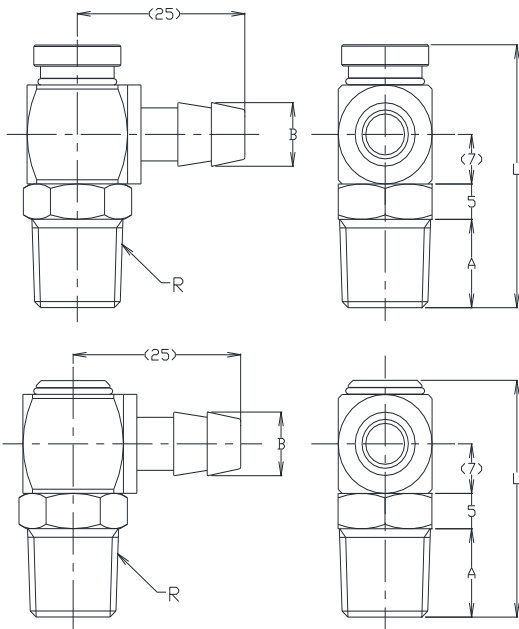
Name of product	Color of ring	Weight	External thread	A	L	Wrench	Axis
ISOH-RR621Q-C	Red • Blue Green • Colorless	52g(50g)	1/4 NPT	0.49	1.44(1.32)	9/16	2

## Swing Swivel (HOSE- R)

S-R512-2C-h · S-R622-2C-h



SOH-R512-2C-h · SOH-R622-2C-h



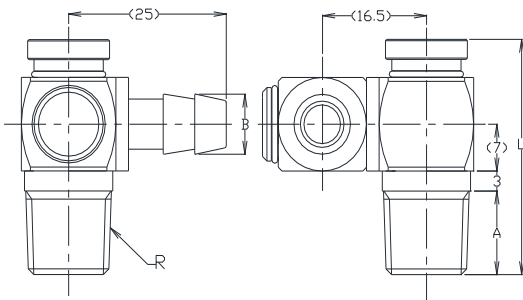
Body material	Steel (Plated)
"	Brass (Plated)
Ring material	Aluminum (Plated)
Seal material	Nitrile rubber (NBR)
Working temperature	-20°C ~ +60°C
Working pressure	1Mpa (10kgf/cm <sup>2</sup> )
Applicable fluids	Air

Name of product	Color of ring	Weight	R	A	B	L	Hex Wrench	Wrench
S-R512-2C-h9	Red • Blue • Yellow • Colorless	31g	1/8	9.5	9	31.5	6	
S-R512-2C-h10.5	Red • Blue • Yellow • Colorless	35g	1/8	9.5	10.5	31.5	6	
S-R622-2C-h9	Red • Blue • Yellow • Colorless	37g	1/4	12.5	9	34.5	6	
S-R622-2C-h10.5	Red • Blue • Yellow • Colorless	40g	1/4	12.5	10.5	34.5	6	
SOH-R512-2C-h9	Red • Blue • Yellow • Colorless	35g(34g)	1/8	9.5	9	33.5(30.5)		12
SOH-R512-2C-h10.5	Red • Blue • Yellow • Colorless	39g(38g)	1/8	9.5	10.5	33.5(30.5)		12
SOH-R622-2C-h9	Red • Blue • Yellow • Colorless	41g(40g)	1/4	12.5	9	36.5(33.5)		14
SOH-R622-2C-h10.5	Red • Blue • Yellow • Colorless	44g(43g)	1/4	12.5	10.5	36.5(33.5)		14

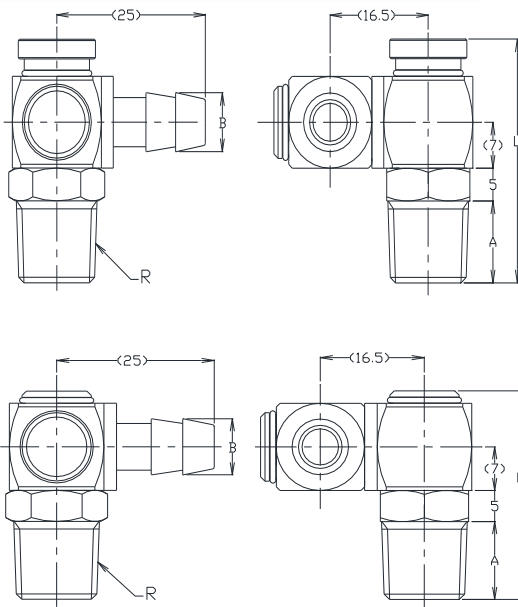
( ) is the length of the Colorless.

## Swing Swivel (HOSE- R) 2-axis

S-RR512-2C-h · S-RR622-2C-h



SOH-RR512-2C-h · SOH-RR622-2C-h



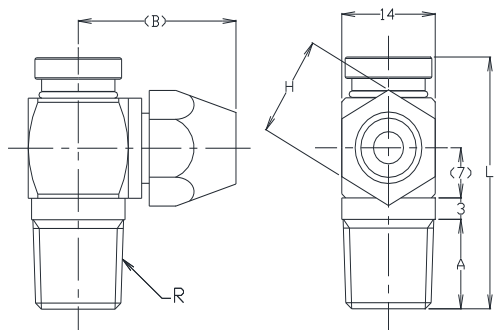
Body material	Steel (Plated)
"	Brass (Plated)
Ring material	Aluminum (Plated)
Seal material	Nitrile rubber (NBR)
Working temperature	-20°C ~ +60°C
Working pressure	1Mpa (10kgf/cm <sup>2</sup> )
Applicable fluids	Air

Name of product	Color of ring	Weight	R	A	B	L	Hex Wrench	Wrench	Axis
S-RR512-2C-h9	Red • Blue • Yellow • Colorless	53g	1/8	9.5	9	31.5	6		2
S-RR512-2C-h10.5	Red • Blue • Yellow • Colorless	57g	1/8	9.5	10.5	31.5	6		2
S-RR622-2C-h9	Red • Blue • Yellow • Colorless	59g	1/4	12.5	9	34.5	6		2
S-RR622-2C-h10.5	Red • Blue • Yellow • Colorless	63g	1/4	12.5	10.5	34.5	6		2
SOH-RR512-2C-h9	Red • Blue • Yellow • Colorless	57g(56g)	1/8	9.5	9	33.5(30.5)		12	2
SOH-RR512-2C-h10.5	Red • Blue • Yellow • Colorless	61g(60g)	1/8	9.5	10.5	33.5(30.5)		12	2
SOH-RR622-2C-h9	Red • Blue • Yellow • Colorless	63g(62g)	1/4	12.5	9	36.5(33.5)		14	2
SOH-RR622-2C-h10.5	Red • Blue • Yellow • Colorless	67g(66g)	1/4	12.5	10.5	36.5(33.5)		14	2

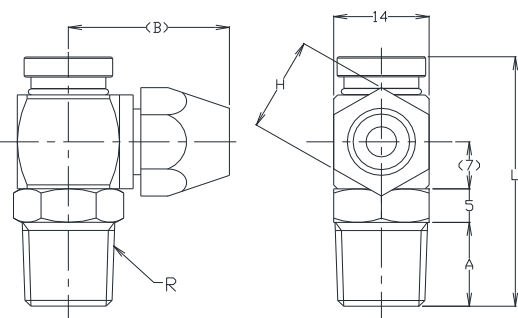
( ) is the length of the Colorless.

## Swing Swivel (Tube-R)

S-R510-C-wt · S-R620-C-wt



SOH-R510-C-wt · SOH-R620-C-wt



Body material	Steel (Plated)
"	Brass (Plated)
Ring material	Aluminum (Plated)
Seal material	Nitrile rubber (NBR)
Working temperature	-20°C ~ +60°C
Working pressure	1Mpa (10kgf/cm <sup>2</sup> )
Applicable fluids	Air

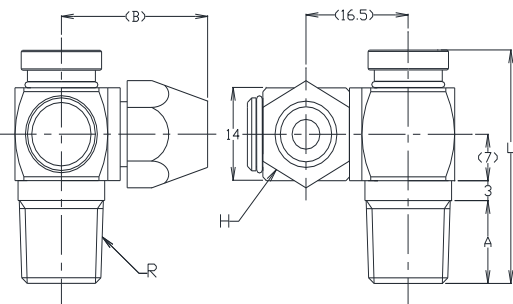


Name of product	Color of ring	Weight	R	A	H	B	L	Tube	Hex Wrench	Wrench
S-R510-C-WT64	Red•Blue•Yellow•Colorless	37g	1/8	9.5	12	19.5	31.5	6-4	6	
S-R510-C-WT85	Red•Blue•Yellow•Colorless	38g	1/8	9.5	14	22.5	31.5	8-5	6	
S-R510-C-WT1065	Red•Blue•Yellow•Colorless	47g	1/8	9.5	16	25.5	31.5	10-6.5	6	
S-R620-C-WT64	Red•Blue•Yellow•Colorless	42g	1/4	12.5	12	19.5	34.5	6-4	6	
S-R620-C-WT85	Red•Blue•Yellow•Colorless	44g	1/4	12.5	14	22.5	34.5	8-5	6	
S-R620-C-WT1065	Red•Blue•Yellow•Colorless	53g	1/4	12.5	16	25.5	34.5	10-6.5	6	
SOH-R510-C-WT64	Red•Blue•Yellow•Colorless	41g(40g)	1/8	9.5	12	19.5	33.5(30.5)	6-4		12
SOH-R510-C-WT85	Red•Blue•Yellow•Colorless	42g(41g)	1/8	9.5	14	22.5	33.5(30.5)	8-5		12
SOH-R510-C-WT1065	Red•Blue•Yellow•Colorless	51g(50g)	1/8	9.5	16	25.5	33.5(30.5)	10-6.5		12
SOH-R620-C-WT64	Red•Blue•Yellow•Colorless	46g(45g)	1/4	12.5	12	19.5	36.5(33.5)	6-4		14
SOH-R620-C-WT85	Red•Blue•Yellow•Colorless	48g(47g)	1/4	12.5	14	22.5	36.5(33.5)	8-5		14
SOH-R620-C-WT1065	Red•Blue•Yellow•Colorless	57g(56g)	1/4	12.5	16	25.5	36.5(33.5)	10-6.5		14

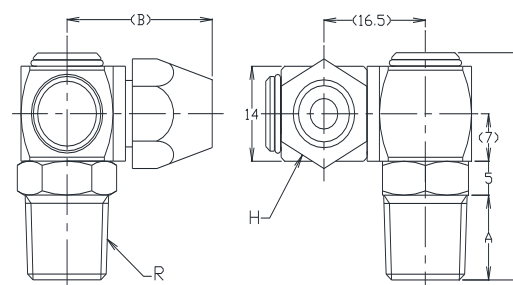
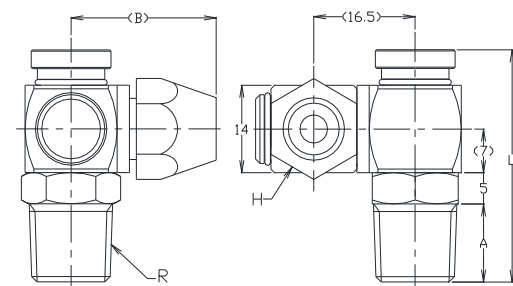
() is the length of the Colorless.

## Swing Swivel (Tube-R) 2-axis

S-RR510-C-wt · S-RR620-C-wt



SOH-RR510-C-wt · SOH-RR620-C-wt

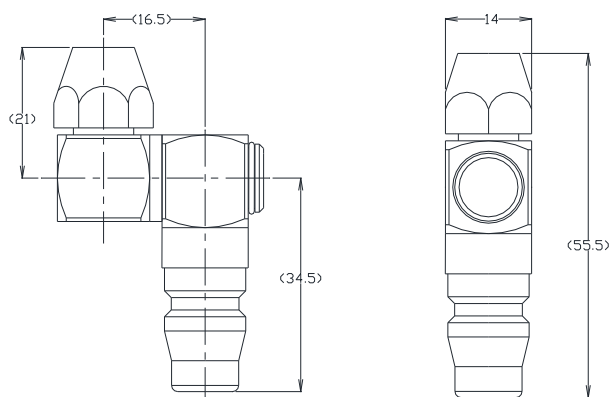


Body material	Steel (Plated)
"	Brass (Plated)
Ring material	Aluminum (Plated)
Seal material	Nitrile rubber (NBR)
Working temperature	-20°C ~ +60°C
Working pressure	1Mpa(10kgf/cm <sup>2</sup> )
Applicable fluids	Air

Name of product	Color of ring	Weight	R	A	H	B	L	Tube	Hex Wrench	Wrench	Axis
S-RR510-C-WT64	Red•Blue•Yellow•Colorless	59g	1/8	9.5	12	19.5	31.5	6-4	6		2
S-RR510-C-WT85	Red•Blue•Yellow•Colorless	60g	1/8	9.5	14	22.5	31.5	8-5	6		2
S-RR510-C-WT1065	Red•Blue•Yellow•Colorless	70g	1/8	9.5	16	25.5	31.5	10-6.5	6		2
S-RR620-C-WT64	Red•Blue•Yellow•Colorless	64g	1/4	12.5	12	19.5	34.5	6-4	6		2
S-RR620-C-WT85	Red•Blue•Yellow•Colorless	67g	1/4	12.5	14	22.5	34.5	8-5	6		2
S-RR620-C-WT1065	Red•Blue•Yellow•Colorless	75g	1/4	12.5	16	25.5	34.5	10-6.5	6		2
SOH-RR510-C-WT64	Red•Blue•Yellow•Colorless	63g(62g)	1/8	9.5	12	19.5	33.5(30.5)	6-4		12	2
SOH-RR510-C-WT85	Red•Blue•Yellow•Colorless	64g(63g)	1/8	9.5	14	22.5	33.5(30.5)	8-5		12	2
SOH-RR510-C-WT1065	Red•Blue•Yellow•Colorless	74g(73g)	1/8	9.5	16	25.5	33.5(30.5)	10-6.5		12	2
SOH-RR620-C-WT64	Red•Blue•Yellow•Colorless	68g(67g)	1/4	12.5	12	19.5	36.5(33.5)	6-4		14	2
SOH-RR620-C-WT85	Red•Blue•Yellow•Colorless	71g(70g)	1/4	12.5	14	22.5	36.5(33.5)	8-5		14	2
SOH-RR620-C-WT1065	Red•Blue•Yellow•Colorless	79G(78g)	1/4	12.5	16	25.5	36.5(33.5)	10-6.5		14	2

## Swing Swivel (Tube-Plug)

### S-RRH-WT85

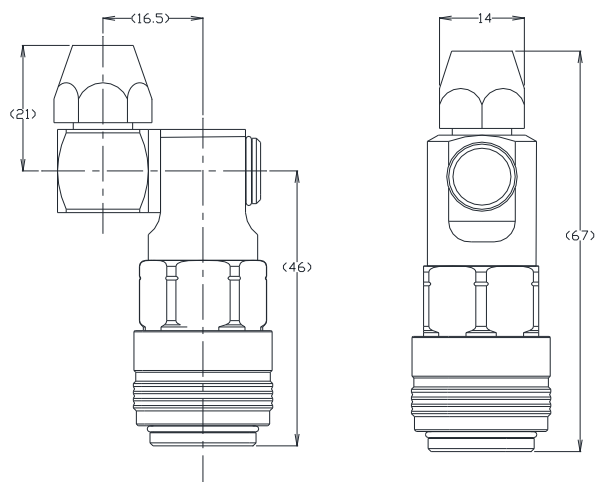


Name of product	Weight	Fit tube
S-RRH-WT85	74g	8-5

Body material	Steel (Plated)
Seal material	Nitrile rubber (NBR)
Working temperature	-20°C ~ +60°C
Working pressure	1Mpa (10kgf/cm <sup>2</sup> )
Applicable fluids	Air

## Swing Swivel (Tube-SOCKET)

### S-RRSOC-WT85

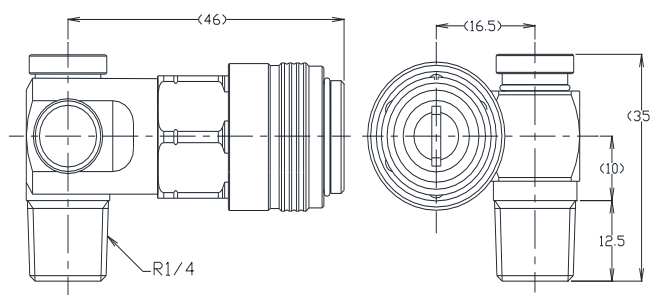


Name of product	Weight	Fit tube
S-RRSOC-WT85	116g	8-5

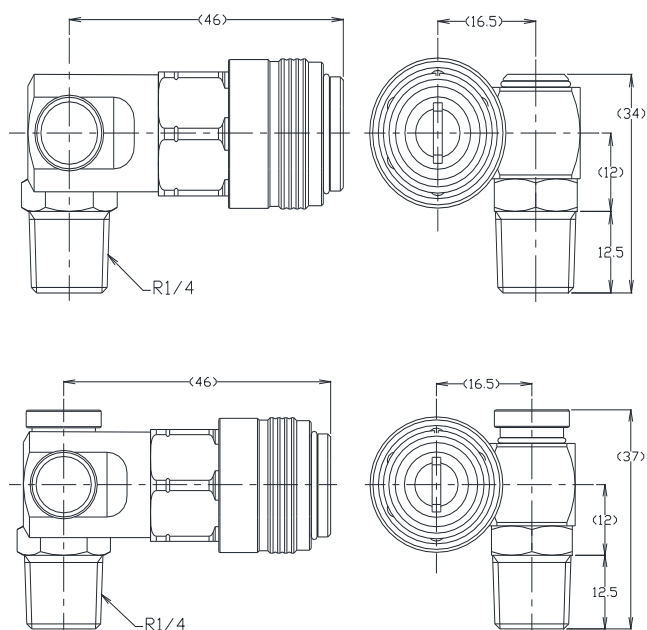
Body material	Steel (Plated)
"	Brass (Plated)
Seal material	Nitrile rubber (NBR)
Working temperature	-20°C ~ +60°C
Working pressure	1Mpa (10kgf/cm <sup>2</sup> )
Applicable fluids	Air

# Swing Swivel (SOCKET - R)

## S-RR620-SOC



## SOH-RR620-SOC



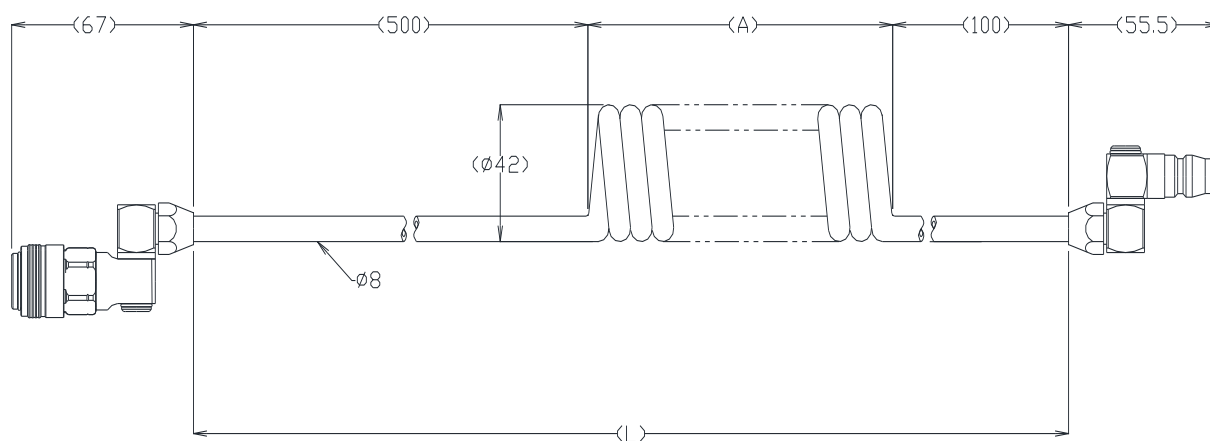
Body material	Steel (Plated)
"	Brass (Plated)
Ring material	Aluminum (Plated)
Seal material	Nitrile rubber (NBR)
Working temperature	-20°C ~ +60°C
Working pressure	1Mpa (10kgf/cm <sup>2</sup> )
Applicable fluids	Air

Name of product	Weight	Hex Wrench	Wrench	Color of ring
S-RR620-SOC	114g	6		Red • Blue • Yellow • Colorless
SOH-RR620-SOC	118g (117g)		14	Red • Blue • Yellow • Colorless

() is the length of the Colorless.

# Swing Swivel (Coil tube)

RR-CHU-85Y



Body material	Steel (Plated)
"	Brass (Plated)
"	Urethane tube
Seal material	Nitrile rubber (NBR)
Working temperature	-20°C ~ +60°C
Working pressure	0.7Mpa (7kgf/cm <sup>2</sup> )
Applicable fluids	Air

Name of product	(A)	(L)	* Range of use	Tube color
RR-CHU-85Y-2M	180	780	2m	Yellow
RR-CHU-85Y-4M	400	1000	4m	Yellow



### <Notes for Use>

1. These products can only be used for fluid coupling applications.
2. These products can only be used with the applicable fluids. The applicable fluids are "water", "oil" and "air".
3. Do not use these products beyond the maximum working pressure of "980 kpa (10 kgf/cm<sup>2</sup>)".
4. Do not use these products beyond the operating temperature range.
5. Do not apply any impact, bend, pull or etc. It will cause damage to the product.
6. Do not use these products in locations where metal powder, sand dust or etc. can enter. It will cause damage and faulty operations.
7. Do not disassemble the swivel joints.
8. Do not rotate the head of the swivel joint continuously, as it will quicken the deterioration of the internal O-ring.
9. Use a sealing material for installation on the tapered male threads for piping.
10. Do not exceed the maximum tightening torque of the threads (refer to the table on the right) when attaching the product. It will cause damage to the threads.
11. Firmly attach the hose to the base of the hose nipple, and fix firmly with a hose band, clamp or etc.
12. Use a hose size which conforms to the size of the hose nipple. If a non-compatible size is used, it may cause leakage of fluids or damage the hose
13. **Swivel joint may be tight before it is used. Turn back and forth several times. Grease will make it turn smoothly.**

PT	Allen Wrench	Wrench
1/8	690 N · cm	
	(70 kgf · cm)	
1/4	1080 N · cm	
	(110 kgf · cm)	
3/8	1470 N · cm	1080 N · cm
	(150 kgf · cm)	(110 kgf · cm)

*Inquiries and Contact*

## **I. Field Co., Ltd**

310-1, sogi, tomioka-shi, Gunma 370-2315, Japan

TEL +81-274-62-1015 / FAX +81-274-62-1093

**Website:** <https://www.i-field.jp>

**E-mail:** [sales@i-field.jp](mailto:sales@i-field.jp)